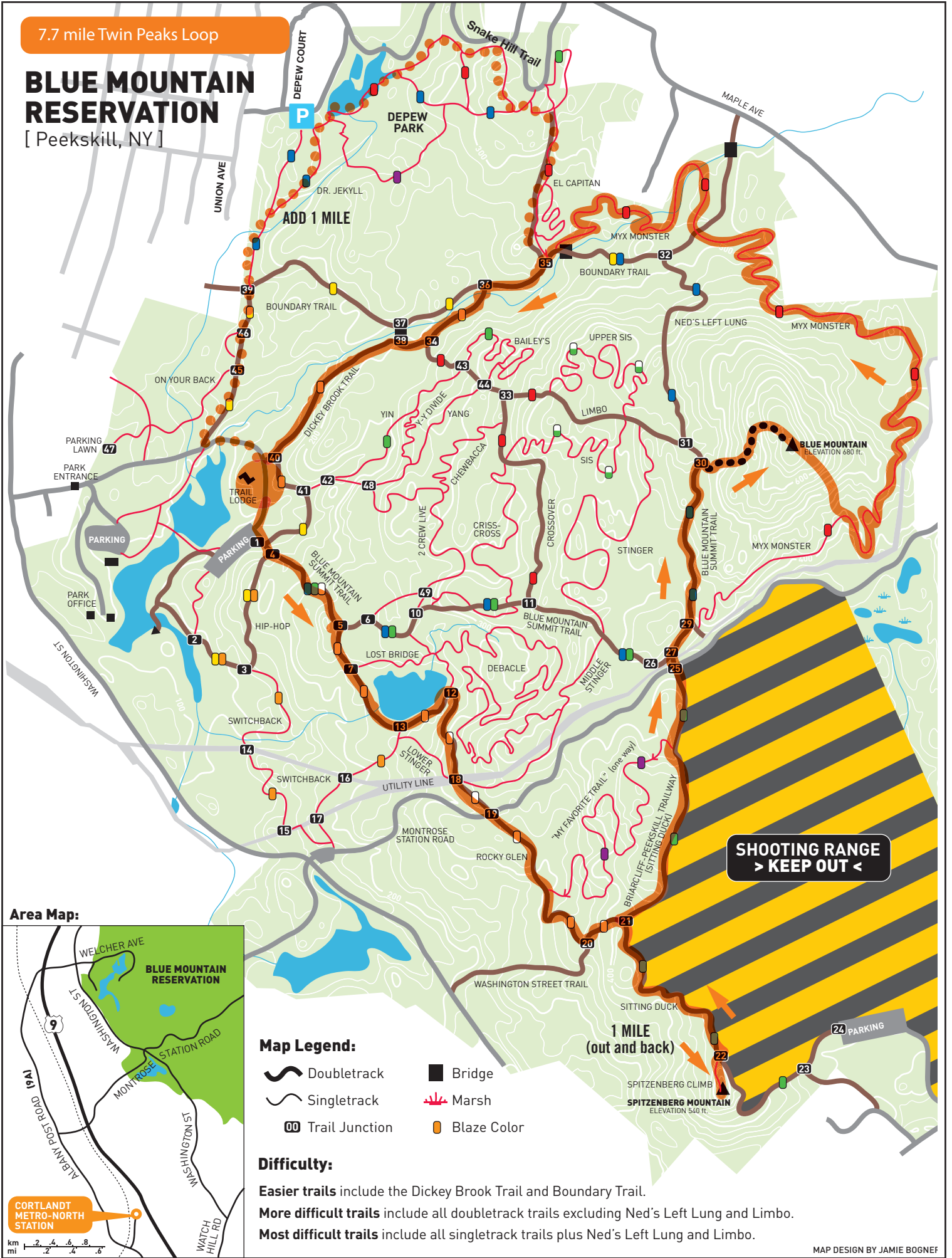


7.7 mile Twin Peaks Loop

BLUE MOUNTAIN RESERVATION

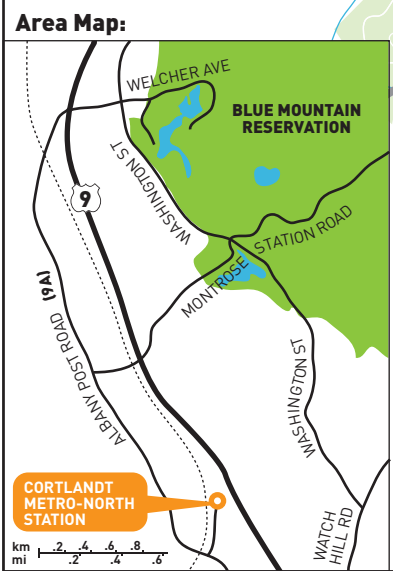
[Peekskill, NY]



ADD 1 MILE

1 MILE (out and back)

SHOOTING RANGE
> KEEP OUT <



Map Legend:

- Doubletrack
- Singletrack
- Trail Junction
- Bridge
- Marsh
- Blaze Color

Difficulty:

Easier trails include the Dickey Brook Trail and Boundary Trail.
More difficult trails include all doubletrack trails excluding Ned's Left Lung and Limbo.
Most difficult trails include all singletrack trails plus Ned's Left Lung and Limbo.